

VIPER06 PSPICE Model Usage Instructions

The PSPICE model has been developed on OrCAD Capture v. 16.6. We recommend to use this version or higher to avoid convergence problems and speed up the simulation. The zip package contains two files:

- “VIPER06.OLB”, the symbol to place in the schematic.
- “VIPER06.LIB”, the library containing the real implementation of the model.

In order to use the model, create a new OrCAD project, add the VIPER06.OLB library to your project and select the part you want to simulate. Figure 1 shows the list of available parts of VIPER06.

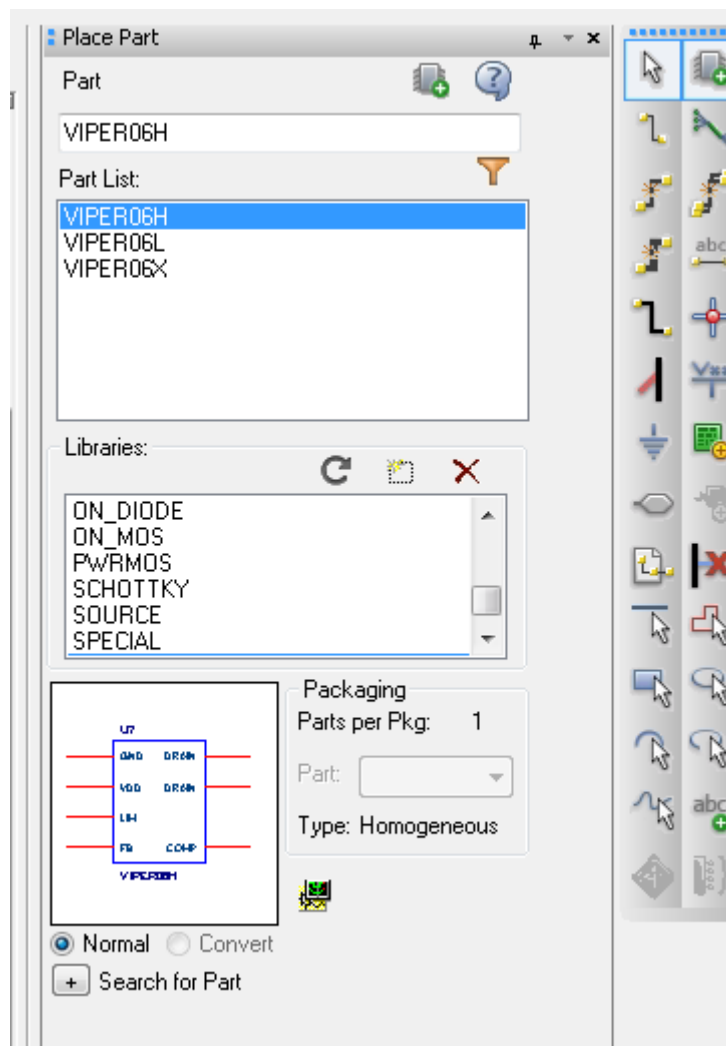


Figure 1 -ViPER06 models. Available parts.

Then add the library reference to your simulation profile, as shown in Figure 2.

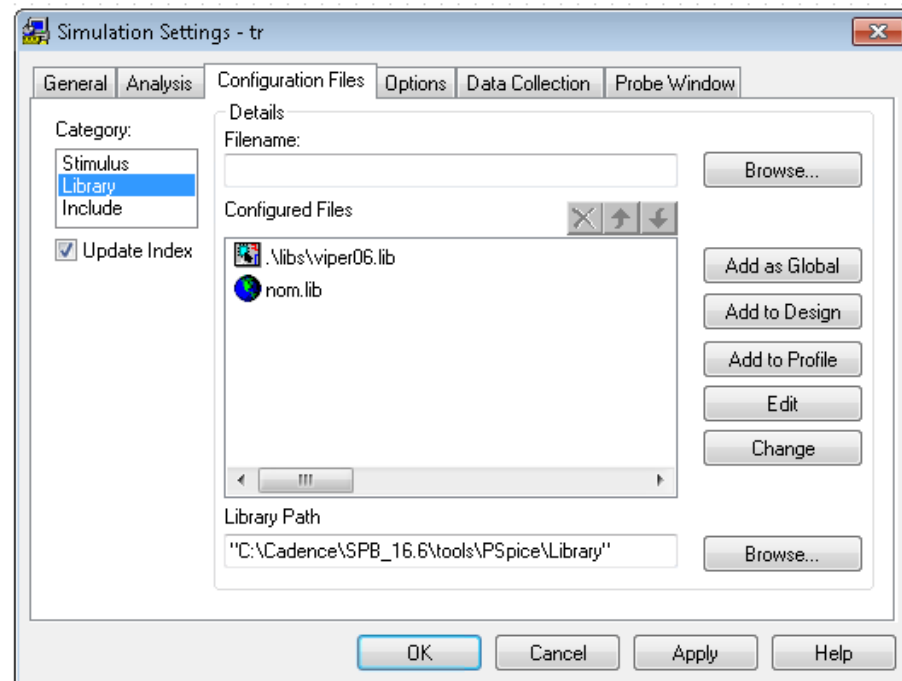
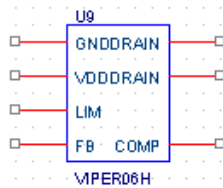
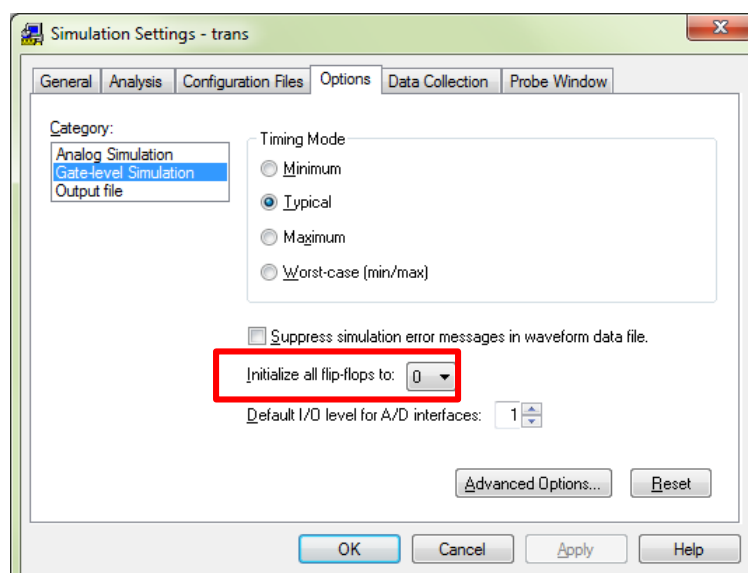


Figure 2 ViPER06 library added to the simulation profile

NOTE. Before starting the simulation, make sure that the option “Initialize all flip-flops” is set to “0”.



In case of convergence problems, check the option “AutoConverge”.

